



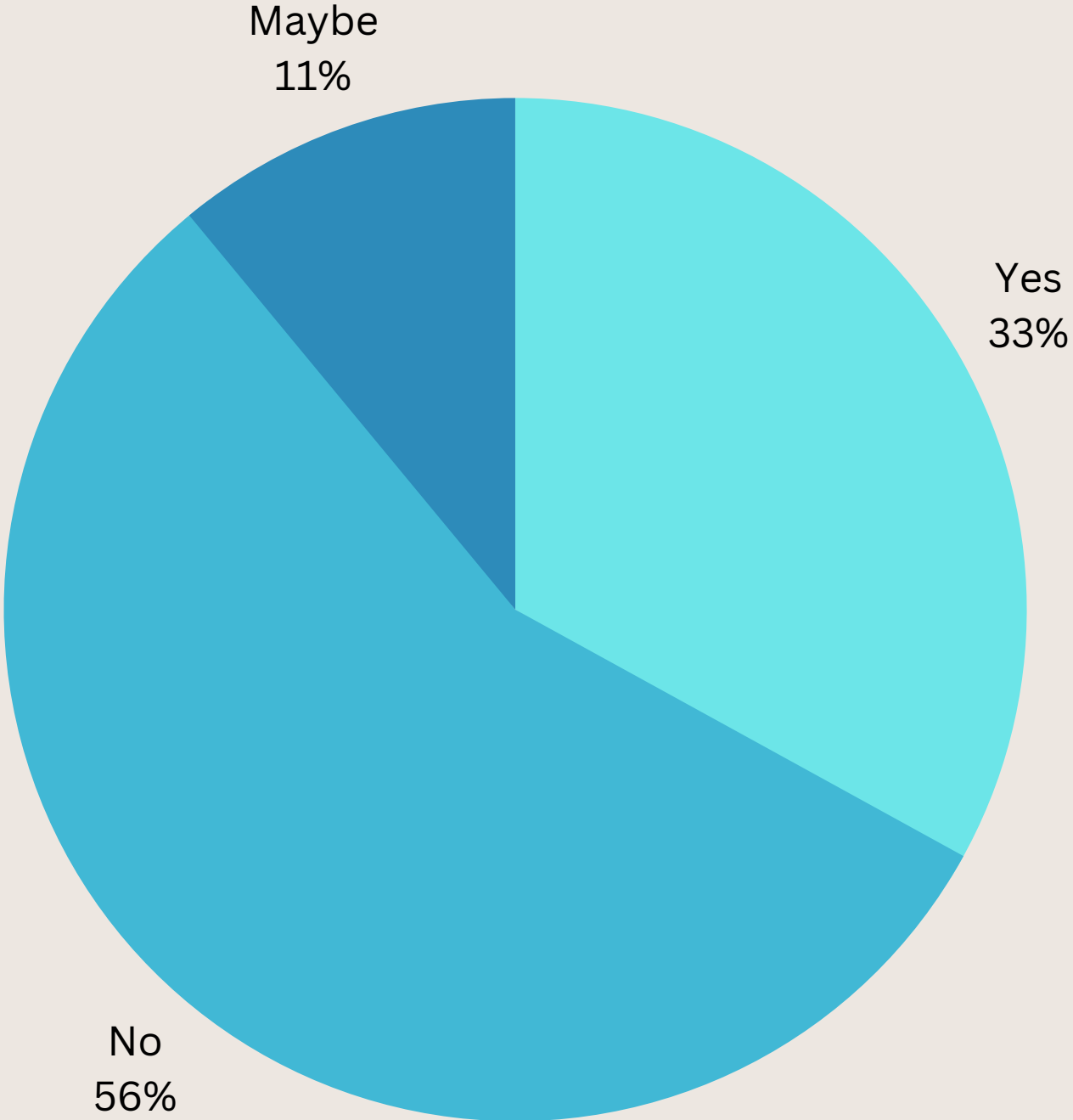
# LEARNING FOR SUSTAINABILITY

GILMERTON PRIMARY SCHOOL-  
STAKEHOLDER VIEWS

TOGETHER WE CAN  
MAKE THE WORLD A  
BETTER PLACE



# 1.HAVE YOU HEARD THE TERM, LEARNING FOR SUSTAINABILITY?



## 2. WHAT DO YOU THINK SUSTAINABILITY MEANS?

TEACHING CHILDREN TO THINK AND PROBLEM SOLVE WHILE BEING MINDFUL OF HOW WE USE THE PLANET'S RESOURCES AND TREAT ITS PEOPLE. LEARNING TO SOLVE PROBLEMS, MAKE CHOICES AND MONITOR OUR BEHAVIOURS TO ENSURE THE PLANET'S HEALTH AND IT'S ABILITY TO CONTINUE TO PROVIDE FOR FUTURE GENERATIONS.

LIVING IN WAYS THAT ENCOURAGE MAINTAINING THE RESOURCES WE HAVE (EG BY REDUCING, REUSING AND RECYCLING) AND CONSIDERING THE IMPACT OUR CONSUMPTION HAS ON THE ENVIRONMENT.

CONSERVING THE RESOURCES WE HAVE IN OUR ENVIRONMENT AND FUTURE-PROOFING THE WORLD.

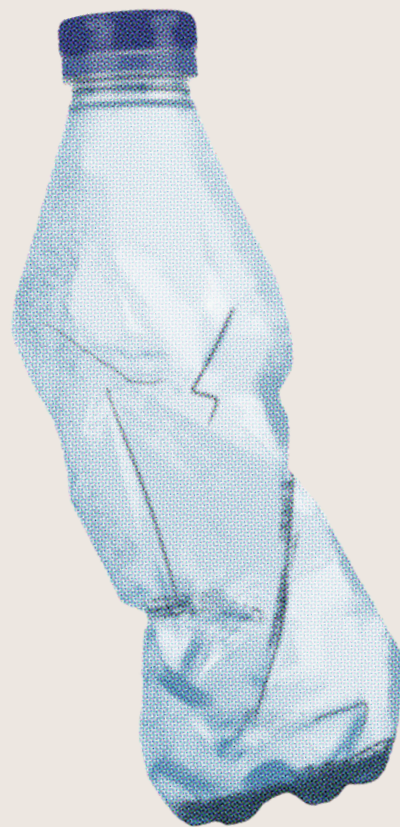
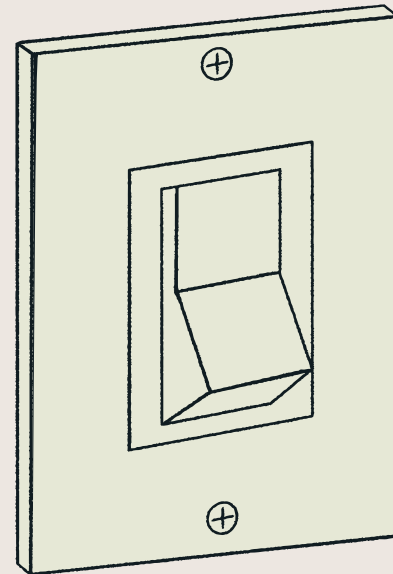
A PERSON WHO HAS A DISABILITY. STABILITY. SUSTAINABLE ROCKET ENGINES THAT ARE BETTER FOR THE ENVIRONMENT.

INSTEAD OF SOMETHING THAT THERE IS A LIMITED AMOUNT OF OIL, SOMETHING THAT IS SUSTAINABLE IS SOMETHING WHERE THERE IS AN INFINITE AMOUNT OF LIKE WIND.

TRYING TO REUSE RESOURCES AS MUCH AS POSSIBLE SO WE AREN'T PRODUCING SO MUCH NEW STUFF

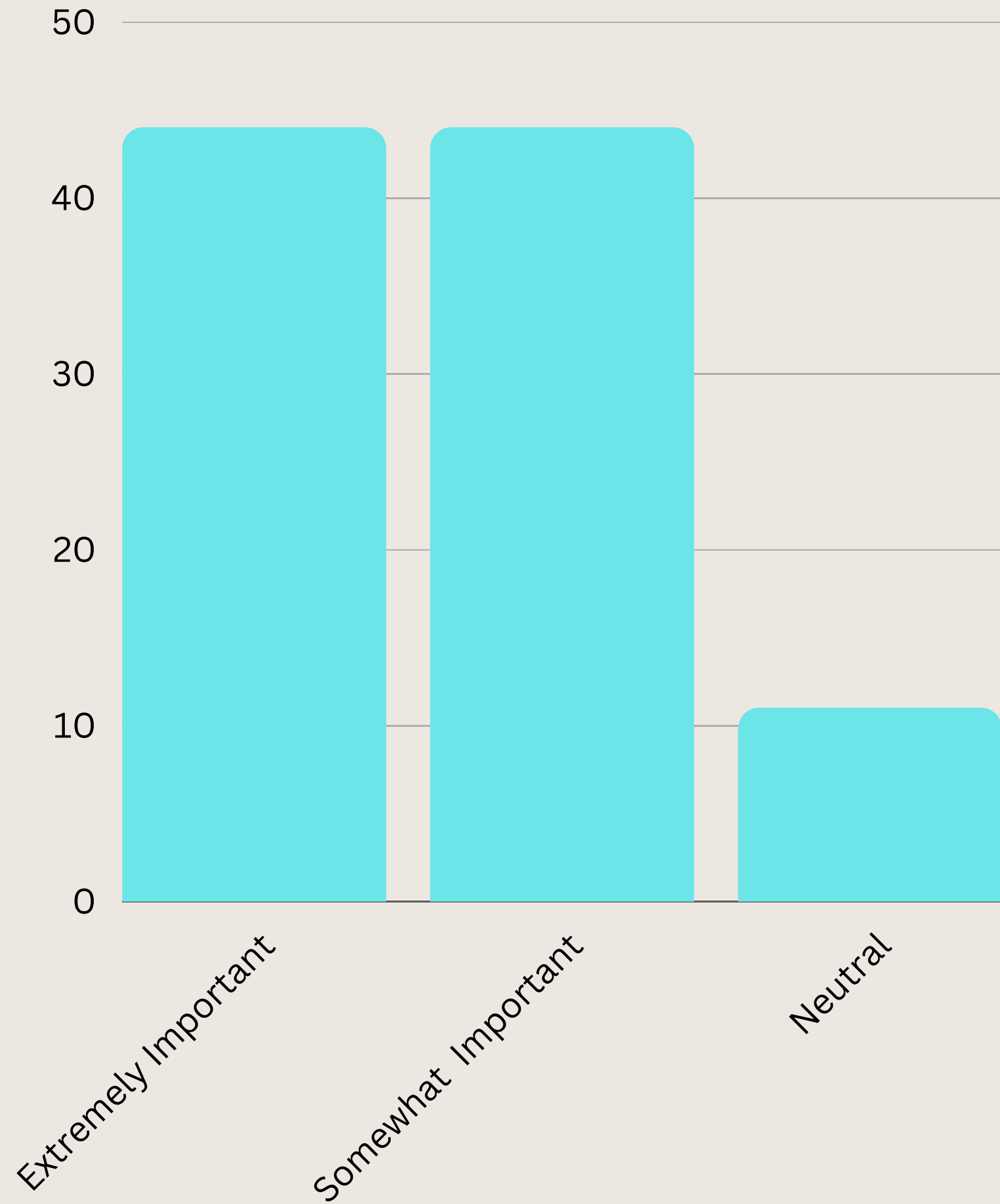
LOOKING AFTER THE ENVIRONMENT, CONSIDERING RESOURCES AND NOT BEING WASTEFUL, CONSIDERING THE FUTURE OF THE PLANET

### 3. IN WHAT WAYS DO YOU HELP TO LOOK AFTER THE PLANET AT HOME?



## 4. IN WHAT WAYS DO YOU HELP LOOK AFTER THE PLANET AT SCHOOL?

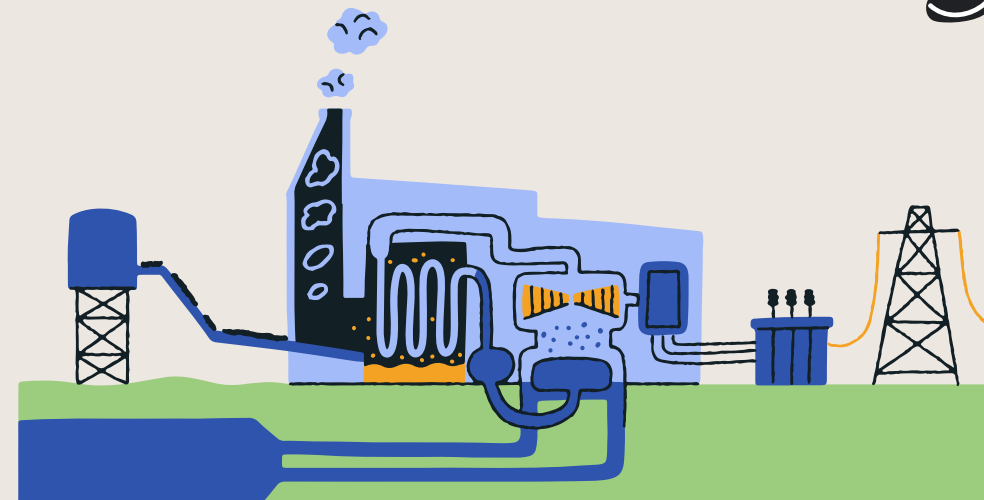




**5. HOW IMPORTANT IS IT TO YOU TO LEARN ABOUT OUR PLANET AND WAYS TO KEEP IT HEALTHY?**



# 6. HOW WOULD YOU LIKE TO LEARN ABOUT THE WIDER WORLD AND WAYS IN WHICH TO PROTECT IT?





# 7. CAN YOU THINK OF ANY WAYS IN WHICH WE COULD HELP TO KEEP OUR PLANET HEALTHY, IN SCHOOL, AT HOME AND IN THE WIDER COMMUNITY?



# WHAT'S NEXT

We have been gathering views from learners, families and staff. Our next steps will include:

- Creating a pupil group- a pupil led group to create an action plan on ways we can help make the world a better place and embed LfS.
- Create a parent/carer group- to develop our school grounds and use your knowledge base around LfS topics to enhance learning experiences.
- Apply for our Green Flag Award.
- Develop community links, inclusion and participation.

